

FROSTER BL 330 PRO-ACTIVE

according to DIN 13277

Equipment

- Key switch
- Forced-air cooling
- 4 drawers
- Automatic fast defrosting
- Door frame heater
- Condensate evaporation
- Potential-free contact
- Digital temperature display
- Comfortable access
- Visual and audible alarm signal
- Minimum/maximum temperature memory



**MADE IN
GERMANY**

CE 0483

PRO-ACTIVE-Features

- Faster response time in the event of impending faults thanks to proactive alarms
- Data recording can be read out via USB interface using a USB stick and software
- Minimisation of temperature deviations in the interior
- Maximum storage safety thanks to harmonised components

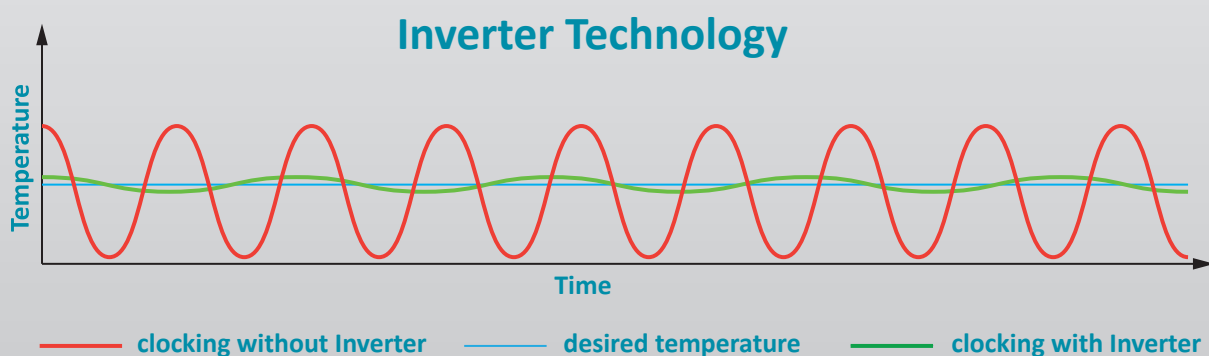


Compressor with inverter technology

- Environmentally friendly natural refrigerant R290.
Very low GWP value = 3 (Global Warming Potential)
- Reduction in power consumption by 31 % compared to the previous model (power consumption = 4.55 kWh/24h)
- Extended service life due to demand-orientated power adjustment
- Frequency: 50/60 Hz

If you need further support or have any questions, please contact us.

info@kirsch-medical.de
+49 (0)781 - 9227 0



- **PRO-ACTIVE- Control:** Permanent, proactive monitoring of the performance data and alerts in the case of deviations. World's most accurate temperature control in refrigerated areas thanks to two standard PT-1000 sensors.
- **External housing** made from galvanised sheet steel (rust-proof), with white, anti-scratch powder coating. Length of the plug cable: approx. 2,8 m.
- **Adjustable feet** to compensate for uneven floors.
- **Interior** made from smooth aluminium with colourless protective coating. Gibs (every 15 mm) for flexible interior arrangement.
- **Interior** can be customised (surcharge may apply). See optional equipment.
- **Extra-thick insulation**, made from high-quality, compression-moulded and environmentally friendly material. Energy saving.
- **Self-closing door** with easy-to-replace plastic magnetic seal frame, lockable.
- **Door stop** on the right-hand side (by default, see illustration), or the left-hand side, can be retrofitted.
- **Min/max. temperature memory.**
- **Forced-air cooling**, switches off automatically when you open the door, ensures a uniform temperature and minimizes temperature deviations.
- **Automatic fast defrosting** thanks to time-limited and temperature-monitored reversal of the refrigerant circuit.
- **Condensate evaporates** in stainless steel heated dish beneath the refrigerator floor.
- **Key switch protected control panel against tampering.** Membrane keyboard with digital temperature display and minimum/maximum temperature memory.
- **Warning functions** with visual and audible alarm signal in the case of power failure and temperature deviations. Door open alarm after 60 seconds.
- **Alarms** can be forwarded using a potential-free contact (e.g., to a mobile phone with optional KIRSCH EVOLUTION CLOUD or to a control centre).
- **Data documentation** can be read via USB interface with KIRSCH Datanet software.
- **Ventilation-enforced refrigerating machine**, vibration free, hermetically sealed, energy saving, low-noise, easy to service.
- **Door frame heater** prevents icing of the door.

Specifications

| | |
|--|------------------------------|
| Capacity | 300 litres |
| Temperature setting | -32 °C |
| Voltage | 220 – 240 V, 50/60 Hz |
| Power consumption | 286 watts |
| Normal consumption | 4.55 kWh/24 h |
| Admissible ambient temperature | from +10 °C to +32 °C |
| Heat emission (max.) | 1090 watts |
| Exterior dimensions (including door handle and distance from wall) | w x d x h = 74 x 78 x 159 cm |
| Usable dimensions | w x d x h = 53 x 42 x 74 cm |
| Exterior dimensions with door open at 90° | w x d = 74 x 142 cm |
| Drawer inner dimensions | w x d x h = 53 x 42 x 10 cm |
| Max. load drawer | 50 kg |
| Weight (Net/gross) | 137 kg/151 kg |
| Temperature deviation without defrosting | +/-0.75 °C |
| Noise emission | 51.1 dB(A) |

Optional equipment

KIRSCH refrigerators and freezers offer numerous equipment options that can be retrofitted.



Castors

Can be equipped with steering and fixed castors.



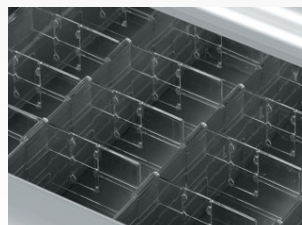
Decorative frame

Made of stainless steel, allows to cover door with a decorative panel (thickness max. 2 mm).



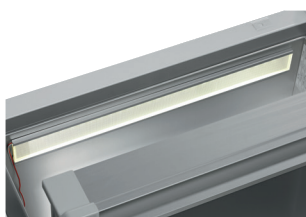
Aluminium or stainless steel drawers on rollers

Up to four drawers are possible in total.



Additional length and cross dividers

for the optimum organisation of your refrigerated goods.



Interior lighting, ceiling

Optional, optimised and energy-efficient illumination of the interior via LED light strip.



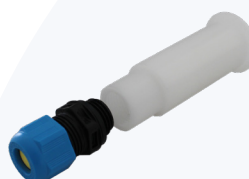
Additional shelves

Wire shelves, robust with load capacity up to 40 and 50 kg.



Vario support

Storage shelf on castors.



Access port

Simple insertion of an external temperature sensor with integrated cable feed-through.



Door coupling

Connects the furniture door to the device.



Condensation tray

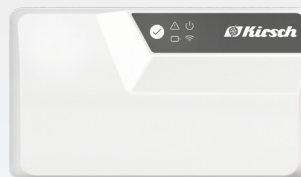
for manual draining of condensation water.

Accessories for temperature documentation



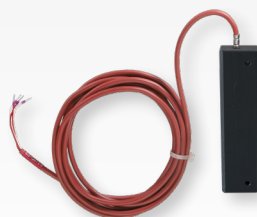
PC-KIT-NET

Automatic temperature documentation and monitoring via your network (LAN connection).



KIRSCH EVOLUTION CLOUD-Module

Maximum storage safety through optimal connectivity and real-time monitoring.



External PT100/PT1000 with cold block

Additional temperature sensor for connection to existing/external monitoring system.



Circular blade temperature recorder

Depending on the model, it is either installed in the machine compartment panel of the unit or integrated into an additional housing attachment.

* For more information about our cloud, please contact us.



Philipp Kirsch GmbH

Im Lossenfeld 14
77731 Willstätt
Germany

Phone: +49 (0) 781 9227-0
Telefax: +49 (0) 781 9227-200
info@kirsch-medical.com

www.kirsch-medical.com



Photograph this QR code
and learn
about our entire
product range.