

# LABO 126 PRO-ACTIVE

according to DIN 13277

## Equipment

- 2 shelves
- Forced-air cooling
- Key switch
- Automatic defrosting
- Condensate evaporation
- Digital temperature display
- Visual and audible alarm signal
- Standalone or undercounter installation

**MADE IN  
GERMANY**



## PRO-ACTIVE-Features

- Faster response time in the event of impending faults thanks to proactive alarms
- Data recording can be read out via USB interface using a USB stick and software
- Minimisation of temperature deviations in the interior
- Maximum storage safety thanks to harmonised components



- **PRO-ACTIVE- Control:** Permanent, proactive monitoring of the performance data and alerts in the case of deviations. World's most accurate temperature control in refrigerated areas thanks to two standard PT-1000 sensors.
- **External housing** made from galvanised sheet steel (rust-proof), with white, anti-scratch powder coating. Length of the plug cable: approx. 2.8 m.
- **Adjustable feet** to compensate uneven floors.
- **Interior made from** impact-resistant, white plastic with moulded-in shelves.
- **Interior** can be customised (surcharge may apply). See optional equipment.
- **Extra-thick energy saving insulation**, made from high-quality, compression-moulded and environmentally friendly material.
- **Lockable door** with easy-to-replace plastic magnetic seal frame.
- **Door hinge** on the right-hand side (by default, see illustration), or the left-hand side, can be retrofitted.
- **Automatic defrosting** with time limit and temperature monitoring.
- **Condensate evaporates** in the refrigerating machine interior.
- **Power failure alarm** (visual and audible alarm), the monitoring unit remains in operation for approx. 30 hours on battery power.
- **Warning functions** with visual and audible alarm signal in the case of temperature deviations.
- **Data documentation** can be read via USB interface with KIRSCH Datanet software.
- **Statically ventilated refrigerating machine**, hermetically sealed, energy saving, low-noise, easy to service.

## Specification

Capacity	120 litres
Temperature setting	approx. +2 °C to +15 °C
Voltage	220 – 240 V, 50 Hz
Power consumption	100 watts
Normal consumption	0.61 kWh/24 h
Admissible ambient temperature	from +10 °C to +38 °C
Heat emission (max.)	181 watts
Exterior dimensions (including door handle and distance from wall)	w x d x h = 54 x 53.5 x 88.8 cm
Usable dimensions	w x d x h = 43 x 33 x 59 cm *
Exterior dimensions with door open at 90°	w x d = 54 x 106 cm
Shelf size	w x d = 43 x 33 cm
Max. shelf load	25 kg
Weight (net/gross)	49 kg/58 kg
Temperature deviation	+/-0.65 °C
Noise emission	38 dB(A)

\*Nutztiefe unten 15 cm geringer

## Optional equipment

KIRSCH refrigerators and freezers offer numerous equipment options that can be retrofitted.



### Glass door

See clearly: avoid opening the door unnecessarily to inspect the contents.



### Condensation tray

for manual disposal of condensation water.



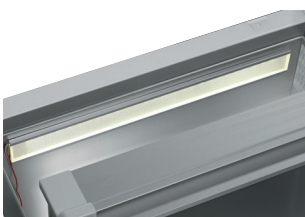
### Plastic-drawer on roller runners

Up to eight drawers are possible in total.



### Additional length and cross dividers

for the optimum organisation of your refrigerated goods.



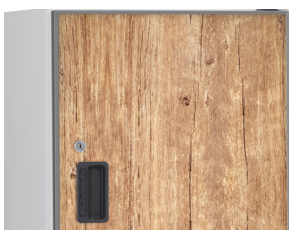
### Interior lighting ceiling

Optional, optimised and energy-efficient illumination of the interior via LED light strip.



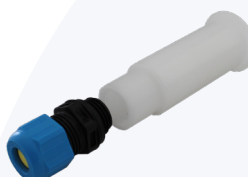
### Additional Shelves

Wire shelves, robust with load capacity up to 40 and 50 kg.



### Decorative frame

Made of stainless steel, allows to cover door with a decorative panel (thickness max. 2 mm).



### Access Port

Simple insertion of an external temperature sensor with integrated cable feed-through.



### Door coupling

Connects the furniture door to the device.



### Castors

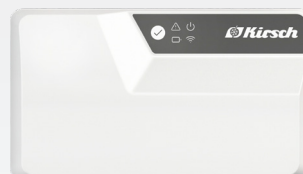
Can be equipped with steering and fixed castors.

## Accessories for temperature documentation



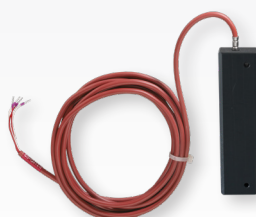
### PC-KIT-NET

Automatic temperature documentation and monitoring via your network (LAN connection).



### KIRSCH EVOLUTION CLOUD-Module

Maximum storage safety through optimal connectivity and real-time monitoring.



### External PT100/PT1000 with cold block

Additional temperature sensor for connection to existing/external monitoring system.



### Circular blade temperature recorder

Depending on the model, it is either installed in the machine compartment panel of the unit or integrated into an additional housing attachment.

\* For more information about our cloud, please contact us.



### Philipp Kirsch GmbH

Im Lössenfeld 14  
77731 Willstätt  
Germany

Phone: +49 (0) 781 9227-0  
Telefax: +49 (0) 781 9227-200  
info@kirsch-medical.com

[www.kirsch-medical.com](http://www.kirsch-medical.com)



Photograph this QR code  
and learn  
about our entire  
product range.