

MED 200 PRO-ACTIVE

according to DIN 13277

Equipment

- Key switch
- Forced-air cooling
- 4 drawers and 1 shelf
- Automatic defrosting
- Condensate evaporation
- Potential-free contact
- Digital temperature display
- Antifreeze
- Visual and audible alarm signal, even in the case of power failure
- Minimum/maximum temperature memory

**MADE IN
GERMANY**



PRO-ACTIVE-Features

- Faster response time in the event of impending faults thanks to proactive alarms
- Data recording can be read out via USB interface using a USB stick and software
- Minimisation of temperature deviations in the interior
- Maximum storage safety thanks to harmonised components

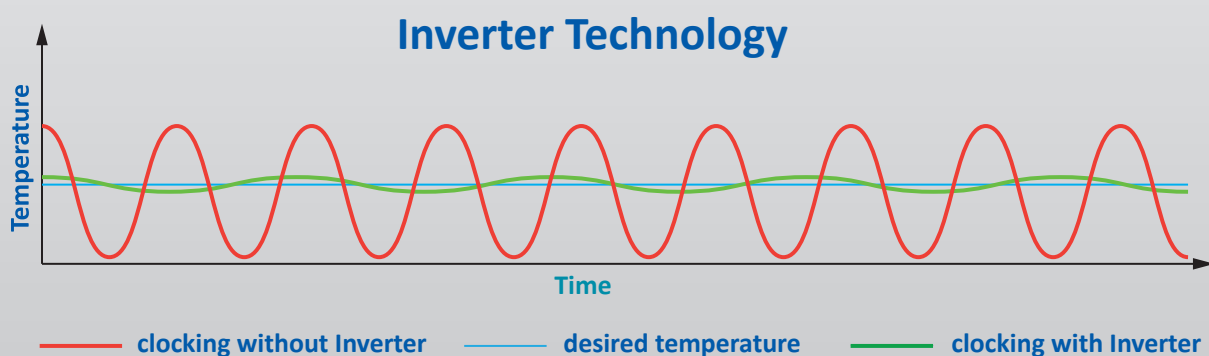


Compressor with inverter technology

- Environmentally friendly natural refrigerant R600a.
Very low GWP value = 3 (Global Warming Potential)
- Reduction in power consumption by 38 % compared to the previous model (power consumption = 0.53 kWh/24h)
- Extended service life due to demand-orientated power adjustment
- Frequency: 50/60 Hz
- Low noise operation

If you need further support or have any questions, please contact us.

info@kirsch-medical.de
+49 (0)781 - 9227 0



- **PRO-ACTIVE-Control:** Permanent, proactive monitoring of the performance data and alerts in the case of deviations. World's most accurate temperature control in refrigerated areas thanks to two standard PT-1000 sensors.
- **External housing** made from galvanised steel sheet (rust protected), with white, scratch-proof powder coating. Plug cable length: approx. 2,8 m.
- **Adjustable feet** positioned at the front to compensate for uneven floors.
- **Interior made from** smooth aluminium with colourless protective coating. Gibs (15 mm increments) for flexible interior arrangement.
- **Interior** can be customised (surcharge may apply). See optional equipment.
- **Extra-thick insulation** made from high-quality, pressure-formed and environmentally friendly material. Energy saving.
- **Door** with easy-to-replace plastic magnetic seal frame, lockable.
- **Door hinge** can be switched from side to side (even retrospectively), right-hand side as standard across the series.
- **Forced-air cooling**, switches off automatically when you open the door, ensures a uniform temperature and reduces temperature reductions to a minimum.
- **Automatic defrost** with time limit and temperature monitoring.
- **Defrost water evaporation** in the refrigerating machine room.
- **Electronic temperature control** protected against tampering by means of key switches. Membrane keyboard with digital temperature display and minimum/maximum temperature memory.
- **Warning functions:** visual and audible alarm signal, even in the case of temperature deviations and power failure. Door open alarm after 60 seconds.
- **Alarms** can be forwarded via email or SMS using the Kirsch EVOLUTION CLOUD Module (optional).
- **Data documentation** can be read via USB interface with KIRSCH Datanet software.
- **Antifreeze** against sub-zero temperatures.
- **Ventilation-enforced refrigerating machine**, hermetically sealed, energy saving, low noise, easy to service. Inlet air and exhaust air flow through the ventilation slits at the front.

Specification

Capacity	170 Liter
Temperature setting	+2 °C to +15 °C
Voltage	220 – 240 V, 50/60 Hz
Power Consumption	30 Watt
Normal Consumption	0,53 kWh/24 h
Admissible ambient temperature	from +10 °C to +38 °C
Heat emission (max.)	142 Watt
Overall dimensions (including distance from wall)	54 x 55.7 x 122 cm (w x d x h)
Usable dimensions	38 x 34 x 72 cm (w x d x h)
Exterior dimensions with door open at 90°	54 x 105 cm (w x d)
Shelf size	38 x 34 x 5.6 cm (w x d x h)
Max. load: drawer/shelf	13 kg/25 kg
Weight (net/gross)	69 kg/80 kg
Temperature deviation	+/-0.69 °C
Noise emission	48.75 dB(A)

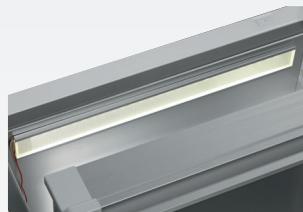
Optional equipment

KIRSCH refrigerators and freezers offer numerous equipment options that can be retrofitted.



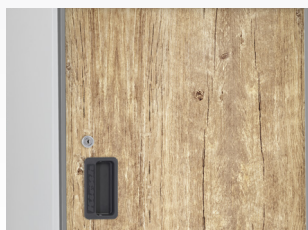
Additional length and cross dividers

for the optimum organisation of your refrigerated goods.



Interior lighting, ceiling

Optional, optimal and energy-efficient lighting for the interior using an LED lightstrip.



Decorative frame

Made of stainless steel, allows to cover door with a decorative panel (thickness max. 2 mm).



Drawers on runners

Up to eight drawers are possible in total.



Door coupling

Connects the furniture door to the device.



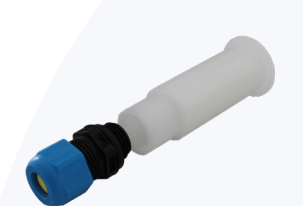
Additional Shelves

Wire shelves, robust with load capacity up to 40 and 50 kg.



Castors

Can be equipped with steering and fixed castors.



Access Port

Simple insertion of an external temperature sensor with integrated cable feed-through.



Condensation tray

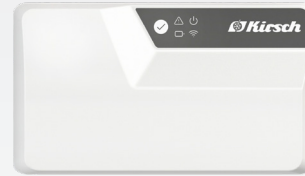
for manual disposal of condensation water.

Equipment for temperature documentation



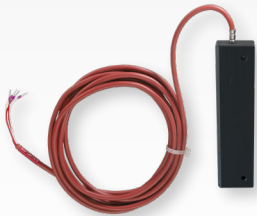
PC-KIT-NET

Automatic temperature documentation and monitoring via your network (LAN connection).



KIRSCH EVOLUTION CLOUD-Module

Maximum storage safety through optimal connectivity and real-time monitoring. *



External PT100/PT1000 with cold block

Additional temperature sensor for connection to existing/external monitoring system.



Circular blade temperature recorder

Depending on the model, it is either installed in the machine compartment panel of the refrigerator or freezer or integrated into an additional housing attachment.

* For more information about our cloud, please contact us.

Philipp Kirsch GmbH

Im Lossenfeld 14
77731 Willstätt

Telefon: +49 (0) 781 9227-0
Telefax: +49 (0) 781 9227-200
info@kirsch-medical.de

www.kirsch-medical.com



You can find our complete product overview on our website:
www.kirsch-medical.com