

“DAIHAN” WiseBath® WB Digital Precise Water Bath, 6-/11-/22- Lit.
 With Digital Fuzzy Control System & Lid, Back Light LCD, up to 100°C, ±0.1°C, “PL insurance”, “CE-Certificate”



WB-11

Specification

Model		WB - 6	WB - 11	WB - 22
Dimension (w × d × h)	Bath (mm)	300 × 155 × 150	302 × 240 × 150	500 × 295 × 150
	External (mm)	325 × 180 × 260	325 × 265 × 260	535 × 330 × 260
Heater		800 W	1 kW	2 kW
Capacity		6 Lit.	11 Lit.	22 Lit.
Temp.	Range	Ambient + 5°C ~ 100°C		
	Accuracy	±0.1°C		
	Uniformity	±1.0°C		
	Sensor	PT100		
Controller		Digital Fuzzy Controller with Jog - Shuttle Switch (Turn + Push)		
Display		Digital LCD with Back-Light Function		
Timer		99hr 59min (Delay & Continuous function included)		
Safety Device		Over Temp. and Over Current Protector, Sensor Error Detector		
Material	Internal	Stainless Steel (# 304)		
	External	Powder Coated Steel		
Lid		Including Stainless Steel Flat Lid		
Drain Valve		None	Available	
Others		Storage Function (Temp., Timer) Locking Mode (Jog - Shuttle Input disabled) User Self - compensation function Alarm (Error Status and Timer - end)		
Power Supply*		AC 110 V, 60 Hz or AC 230 V, 50 / 60 Hz		

* Other Specifications are available upon customer's request.

Applications & Features

- Ideal for Biotechnology, Clinical, Environmental, Medical, Petroleum, Pharmaceutical or Industrial Applications
- Digital Fuzzy Controller Implementing Maximum Temp. Accuracy.
- Simplest Control by Jog-Shuttle Switch (Patent pending) and Digital LCD with Back-Light Function.
- User's Self-compensation function to control difference between real temperature and indicated temperature. (±10.0°C)
- Stainless Steel Bath for Superior Durability & High Thermal Efficiency.
- Stainless Steel Lid prevents Evaporation and keeps Constant Temperature.
- Over Temperature & Over Current Protection, Sensor Error Detection.
- Digital Timer Function(99hr 59min) : 'Delay Time' and 'Operation Time' can be controlled.
- Storage function for the Set Values of Temperature and Timer
- Alarm function : Error Status and Timer-end
- Locking Mode supported for Experimental Safety (Input to Jog-Shuttle can be disabled)
- PL(Product Liability) Insurance

Ordering Information

DH.WB000106* Water Bath, WB-6, 6 Lit.
 DH.WB000111* , WB-11, 11 Lit.
 DH.WB000122* , WB-22, 22 Lit.
 *Incl. Stainless steel flat lid × 1ea

Spare Accessories

DH.WB010106 Flat Lid, Stainless Steel, BF106, for 6 Lit.
 DH.WB010111 , BF111, for 11 Lit.
 DH.WB010122 , BF122, for 22 Lit.

Optional Accessories

DH.WB010206 Dome Lid, Stainless Steel, BD206, for 6 Lit.
 DH.WB010211 , BD211, for 11 Lit.
 DH.WB010222 , BD222, for 22 Lit.

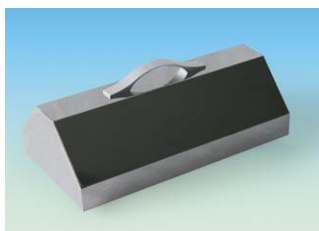
Patented Control System

(No. 10-0554098)

1 or 2 Mode Buttons + Jog Shuttle Switch
 Realize “Easy to Use”



Flat Lid (Included)



Dome Lid(Optional)