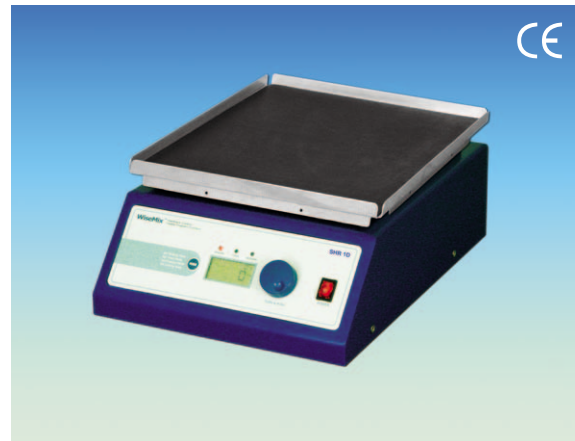


"Witeg" **WiseShake® SHR** Digital Reciprocating Shaker

With Programmable Digital Feedback Control System, 10~300 rpm, "CE-Certificate"

Specification			
Model	SHR-1D	SHR-2D	
Motor	Brushless DC Motor		
Dimension (w × d × h mm)	250 × 330 × 150	400 × 480 × 160	
Base Platform Size (mm)	230 × 230	350 × 350	
Max. Load (kg)	8	10	
Amplitude of Rotation (mm)	10, 15, 20 Available. (15 as Factory default)	20, 30, 40 Available. (30 as Factory default)	
Speed Range (rpm)	10 – 300		
Controller	Programmable Digital Feedback Controller with Jog-Shuttle Switch (Turn + Push)		
Program Function	10 Steps, 6 Programs		
Display	Digital LCD Display (Timer, RPM and Power bar-graph)		
Platform	Universal Platform for various Shapes & Size of Flask		
Capacity of Flask Holder	FH100	9 ea	20 ea
	FH250	7 ea	16 ea
	FH500	4 ea	9 ea
Holder	Durable & Flexible Plastic Flask holder		
Safety Device	Over Load Protector for motor		
Weight (kg)	14	20	
Others	Smooth Start and Change of the Stirring Speed for stable running Storage Function (Program, RPM, Timer) Locking Mode (Jog-Shuttle Input disabled) Alarm (Error Status and Timer-end)		
Power Supply*	Free Voltage (AC 80V~240V, 50/60Hz)		

* Other Specifications are available upon customer's request.



SHR-1D with Rubber Mat Platform (SP110)



SHR-2D with Universal Platform (SP200)

Ordering Information

DH.WSR04020 Digital Reciprocating Shaker, SHR-1D, without Platform
 DH.WSR04022 , SHR-2D, without Platform

Optional Accessories

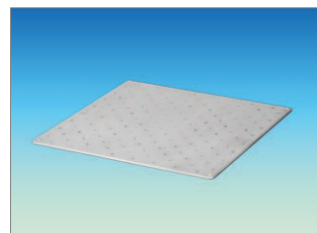
DH.WSO504100 Universal Platform for SHR-1D, SP100, w230 × d230mm
 DH.WSO504110 Rubber Mat Platform for SHR-1D, SP110, w270 × d270mm
 DH.WSO504200 Universal Platform for SHR-2D, SP200, w350 × d350mm
 DH.WSO504210 Rubber Mat Platform for SHR-2D, SP210, w370 × d370mm
 DH.WIS504030 Flask Holder, FH100, 50~100ml
 DH.WIS504035 , FH250, 200~300ml
 DH.WIS504040 , FH500, 500~1000ml

Applications & Features

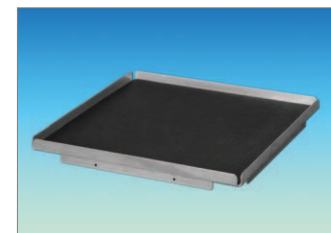
- Ideal for Culturing Cells to Hybridization, Staining and Destaining Gels, and Combinatorial Chemistry.
- Optimal Platform Rotation for Intensive Mixing
- Brushless DC motor (Low Noise & Long Life Cycle)
- High Precision Digital Rotation Speed Control
- Programmable operation modes supported
- Convenient Setting of Timer and Speed using Jog Shuttle Switch
- Smooth Start and Change of the Shaking Speed
- Universal Platform for Easy and Fast Fixation of Any Kind Flasks and Bottles (Option), Over-Load Protection
- Storage function, Alarm
- Locking Mode supported for Experimental Safety (Input to Jog-Shuttle can be disabled)
- Variety of Optional Accessories are available



Flask Holders
(FH100, FH250 & FH520)



Universal Platform
(SP100 / SP200)



Rubber Mat Platform
(SP110 / SP210)