


# Digital orbital shakers DOS series

The 'Sky Line' generation of orbital and rocking shakers is amazingly flexible, reliable and high performance line of universal laboratory equipment. Great selection of accessories and attachments allow easily accommodate shakers to different laboratory applications. Nice design, high performance, user-friendly interface and maintenance-free non-stop operation make this line of shakers perfectly applicable to vast variety of medical, chemical, biological and other laboratories.

## Digital interface



- ### FEATURES
- Optimal platform rotation amplitude for intensive mixing.
  - Advanced stepper motor control system.
  - Digital timer.
  - High precision digital rotation speed controller.
  - Great selection of different accessories and attachments.
  - Sound notification when mixing completed.
  - Memory onboard for storing user settings.
  - Possibility of continuous operation non-stop during days and days.



Anti-vibration system

## Analogue interface


- ### FEATURES
- Optimal platform rotation amplitude for intensive mixing.
  - Simple and easy to operate controls.
  - High precision rotation speed controller.
  - Great selection of different accessories and attachments.
  - Possibility of continuous operation non-stop during days and days.

# Digital rocking shaker

Weight distribution on the platform

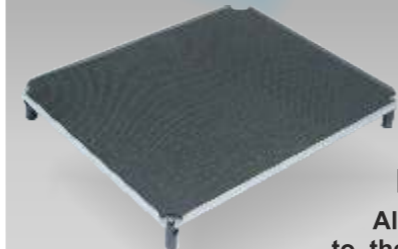


- ### FEATURES
- Variable shaking angle from 1up to 12 degrees.
  - Shaking speed from 1 up to 50 shakes per minute
  - Soft run stepping motor for top performance.
  - Digital timer.
  - High precision operation controller.
  - Sound notification of timer program end.
  - Memory onboard for storing user settings.
  - Quiet and maintenance free mechanism insures possibility of continuous operation non-stop during days and days.



Attachable multi-level platforms

## Accessories



**ATTACHABLE MULTI-LEVEL PLATFORM FOR DRS-12**

Allows to attach several levels to the rocking platform to increase the capacity of shaker. Is very effective and handy to operate.



**MICROPLATE ADAPTER**  
Insures maximal convenience and efficiency working with different kinds of microplates. Depending on the size of a platform accommodates up to 8 and up to 4 micropates

**UNIVERSAL ROLLER CLIPS**  
Very effective universal solution for fixing different flat-bottom laboratory flasks and extra high and unstable laboratory flasks.

**UNIVERSAL MAGNETIC CLIPS**  
Excellent universal solution for easy and fast fixation of any kind of flat bottom laboratory flasks and bottles. Can be used in a combination with roller clips.



## SPECIFICATIONS

	DOS-20S	DOS-10M/DOS-20M	DOS-10L/DOS-20L	DRS-12
Size of working space of platform:	mm 168 x 168	355 x 235	418 x 297	255 x 305
Amplitude of rotation of the platform(rocking angle):	mm(degree) 20	10 / 20	10 / 20	(1 - 12)
Type of rotation:	orbital	orbital	orbital	rocking
Time controller:	min 1-999 & timer off	1-999 & timer off	1-999 & timer off	1-999 & timer off
Speed of rotation (rocking):	RPM 10 - 250	from 50 to 500 / 300	from 50 to 500 / 300	(from 1 to 50)
Environmental temperature:	°C from +4 to +45	from +4 to +45	from +4 to +45	from +4 to +45
Relative moisture of atmosphere (at the temperature of 20 °C):	% up to 80	up to 80	up to 80	up to 80
Power supply (adapter):	⊖ ⊕ (DC in 12V, 1000 mA)	(DC in 12V, 1000 mA)	(DC in 12V, 1000 mA)	(DC in 12V, 1000 mA)
Size of the device (length x width x height):	mm 193 x 170 x 70	347 x 275 x 100	420 x 310 x 100	307 x 275 x 110
Weight:	kg 1,4	5,5	7,5	3,5
	DOS-3M	S-3.02M.10M/S-3.02M.20M	S-3.02M.10L/S-3.02M.20L	
Size of working space of platform:	mm 355 x 235	355 x 235	418 x 297	
Amplitude of rotation of the platform	mm 3	10 / 20	10 / 20	
Type of rotation:	orbital	orbital	orbital	
Speed of rotation	RPM from 50 to 1100	from 50 to 500 / 300	from 50 to 500 / 300	
Environmental temperature:	°C from +4 to +45	from +4 to +45	from +4 to +45	
Relative moisture of atmosphere (at the temperature of 20 °C):	% up to 80	up to 80	up to 80	
Power supply (adapter)	⊖ ⊕ (DC in 12V, 1000 mA)	(DC in 12V, 1000 mA)	(DC in 12V, 1000 mA)	
Size of the device (length x width x height)	mm 347 x 275 x 100	347 x 275 x 100	420 x 310 x 100	
Weight	kg 5,5	5,5	7,5	